



1 maggio 2022
Living Etc

Ufficio Stampa La Cividina
0432 1746101
pr@carterandbennett.com

1960s flair

In this Sydney bungalow,
vivid hues, curvilinear
forms and graphic
applications of black and
white showcase 1960s
modernism at its best

* PHOTOGRAPHY Fiona Susanto
WORDS Karine Monié





LIVING ROOM

'We like how it's elegant but also not stuffy and overly formal.' Textured paint was used on the lower part of the walls for a creative two-tone effect.

Colossus floor lamp; Boom Boom pendant, both Kaiko Design. Juno Josephine sofas; coffee table, all GlobeWest. TS side table, Gubi. Table lamp; rug, both Horgans

Each room in Ara and Janine Campbell's home has amazing visual impact, but it's been a creative design journey to get this standout aesthetic and one that began when the couple decided

they needed more space as their family grew. 'Our house was getting small and we always had our hearts set on finding a bigger block with a swimming pool,' says Ara. After looking for a while, the couple came across this place, which convinced them to move forward. 'We loved the fact it was single storey and relatively open plan, but the biggest selling point was the potential. We knew that with the right designer we could take it to the next level,' explains Janine.

Nic Kaiko, founder and principal at Kaiko Design, was the perfect creative mind to tackle the challenge of reorganising the spaces of the single skin, one-level bungalow — a typical construction for this area of Sydney in the 1980s and 1990s. 'The original layout of the home featured two under-utilised living rooms,' says Nic. 'Through careful replanning, we have added a bedroom toward the front of the house for the clients' daughter as well as a guest powder room.'

Adorned with plaster, tiles, marble and ceramics, the kitchen reveals its new look after a complete redesign, while a butler's pantry and family-sized laundry have been installed. With its additional wardrobe space and a dressing/make-up area, the main bedroom has also been transformed. 'It's our favourite space,' Janine says. 'It has a fantastic luxe hotel feel, which speaks to who we are as travel bugs!'

Throughout the home, Nic balanced practicality with visual impact. 'The original dwelling had a series of brick archways, which we have incorporated into the design across both structural and decorative layers,' he says. The jumping off point for the materials grew from Ara and Janine's love of red travertine. 'Upon that we built a story of colour and texture that referenced the bold character of that stone,' adds Nic, who used cool greys on most of the walls and ceilings and textured paint as a lower dado in the private areas.

'Our home is functional and at the same time it's quite bespoke and unique,' says Ara. 'Everything has its place and serves a purpose. We love that.' Each piece was carefully curated to contribute to the whole design story while having its own character, such as the striking Michelle chairs by SP01 in the dining room. 'These were a real splurge for us, but we are so happy with them,' Janine says.

The mix of vivid hues, graphic applications of white and black and curvilinear forms reflects a contemporary nod to 1960s modernism as well as influences from American abstract artist Frank Stella, who Nic is endlessly inspired by. 'It was pleasing to be able to reference this language in these spaces,' the interior designer says.

Completely at ease in this environment, Ara and Janine love every detail of their house. 'Walking from room to room, there is always something to trigger your senses: unique artwork, unexpected furniture — they all catch your eye,' Janine concludes. 'At the same time, it is very comfortable. It's perfect.'

kaikodesign.com.au

home profile

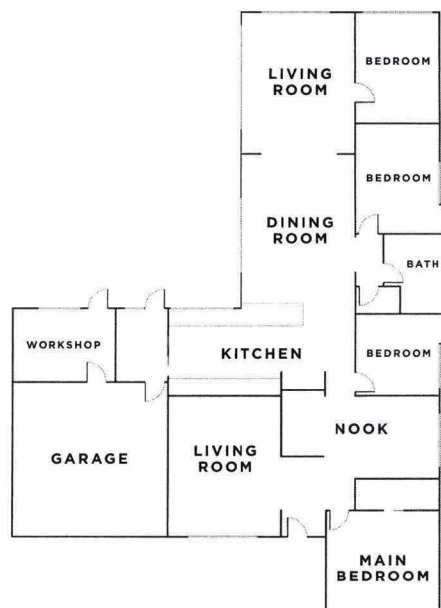
THE OWNERS

Ara and Janine Campbell live here with their four-year-old daughter Isla.

THE PROPERTY

A single-storey, four-bedroom, brown-brick bungalow in the leafy Hills District of Sydney. It's approximately 220 square metres and was transformed by Kaiko Design, who reallocated under-utilised space to add a new powder room and a bedroom at the front of the house and a family-sized laundry and butler's pantry adjoining the completely remodelled eat-in kitchen.

the blueprint

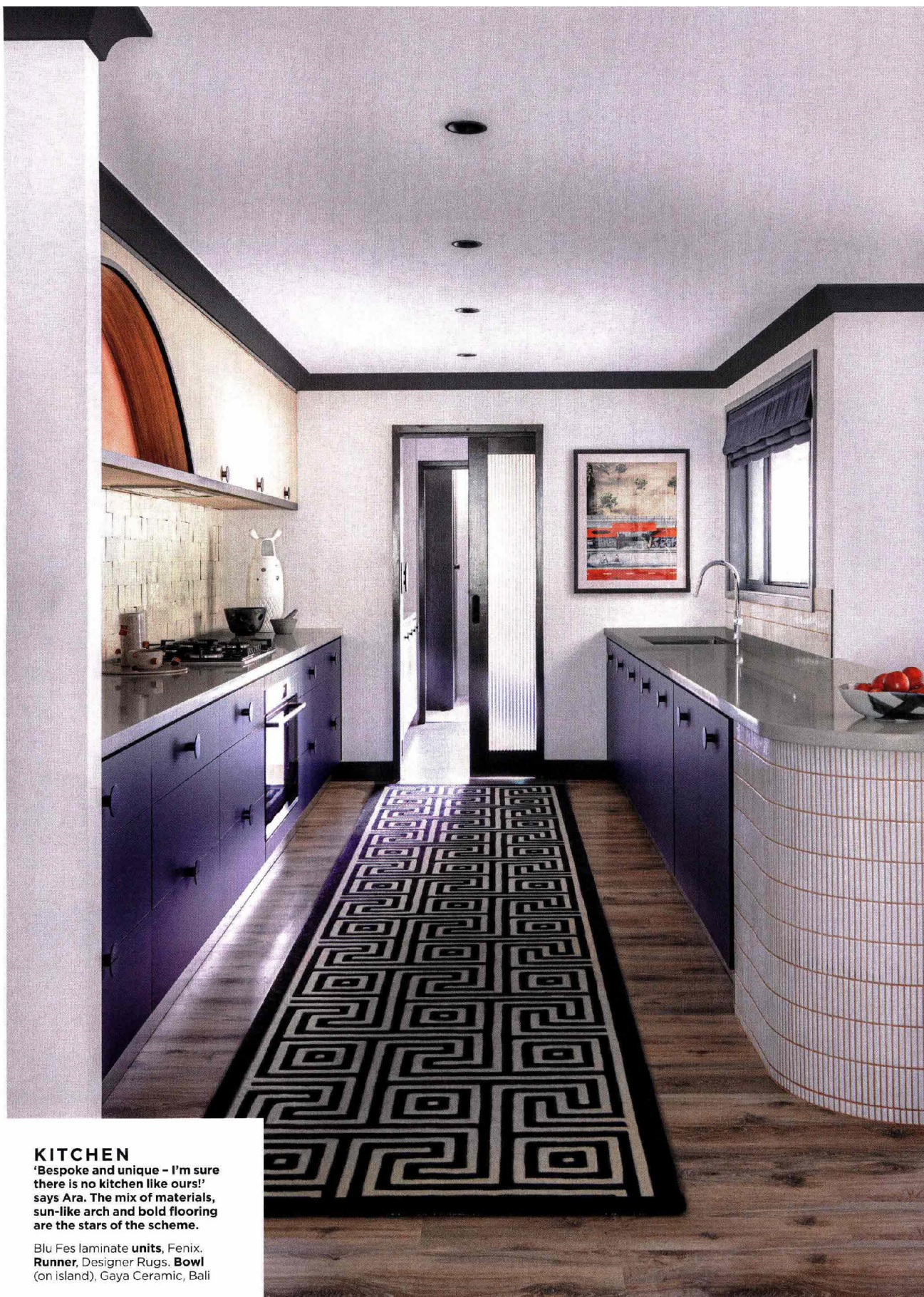




DINING ROOM

'The table with the amazing chairs sets this room apart,' says Janine. And the graphic theme was enhanced by painting the skirting and coving black.

Dining table, Horgans. Michelle dining chairs by SP01. Kubrick pendant light; rug, both Kaiko Design. Sculpture (on table), CB2



KITCHEN

'Bespoke and unique - I'm sure there is no kitchen like ours!' says Ara. The mix of materials, sun-like arch and bold flooring are the stars of the scheme.

Blu Fes laminate units, Fenix, Runner, Designer Rugs, Bowl (on island), Gaya Ceramic, Bali



KITCHEN

Tiling the island upped the style stakes and it has also enhanced the island's beautiful curves.

811 stools, Ton. Arch in Venetian Plaster in Arizona by Dulux, finished with Tonachino and waxed. Casa handmade Grey Chine tiles, Onsite Supply & Design

“Every element has had thought
and purpose put into it – it all
ties together perfectly”

— x —

MAIN BEDROOM

Coral tones energise the grey backdrop and even the throw has a linear look for a modern edge.

Bold **side table**, HC28. Here Comes The Sun **pendant light**, DCW Editions. **Bedspread**, Linen House. **Striped cushions**, Adairs. **Lumbar cushion**, West Elm

houses

home truths

FAVOURITE DESIGN BRAND?

Arflex. They make incredible furniture. We got a side table for the living room and we're so happy with it.

GO-TO WALL COLOUR?

Obviously we love terracotta – we painted the living room ceiling in it.

DREAM PIECE OF FURNITURE?

This house didn't really need a buffet in the dining room, but one day we'd like one from USM.

BIGGEST DESIGN REGRET?

There are a couple of things we decided not to do in this project – little things like recessed curtain tracks. The ceilings of the house were in pretty good shape so we decided not to add the pelmet. On reflection though, it would have been nice to hide the track. The whole process has been an incredible learning exercise for us.

LUSTWORTHY MATERIAL?

The material of the tiles on the kitchen splashback. These were quite expensive but we are so glad we went with them – they add so much texture to the space.

COOLEST ACCESSORY?

Everyone asks where we got the sculpture on the dining table – it's from CB2.

MAIN BATHROOM

The juxtaposition of rectangular and curved shapes is striking.

Ottoman, LivingStyles. Capsule mirrors in Black; Stella 3 wall light in Cobalt; custom vanity, all Kaiko Design. Venice Villa floor tiles, Fabbrika Marmi E Graniti. Dulux Texture paint (lower walls) in Grey Encounter

BEDROOM

A sophisticated scheme for Isla to grow into.

Isla Capiz pendant light, Kaiko Design. Elbe artwork, Urban Road. Guest lounge chair, La Cividina. Thimble side table, Dowel Jones. Bambi chair, Takeshi Sawada for Elements Optimal

